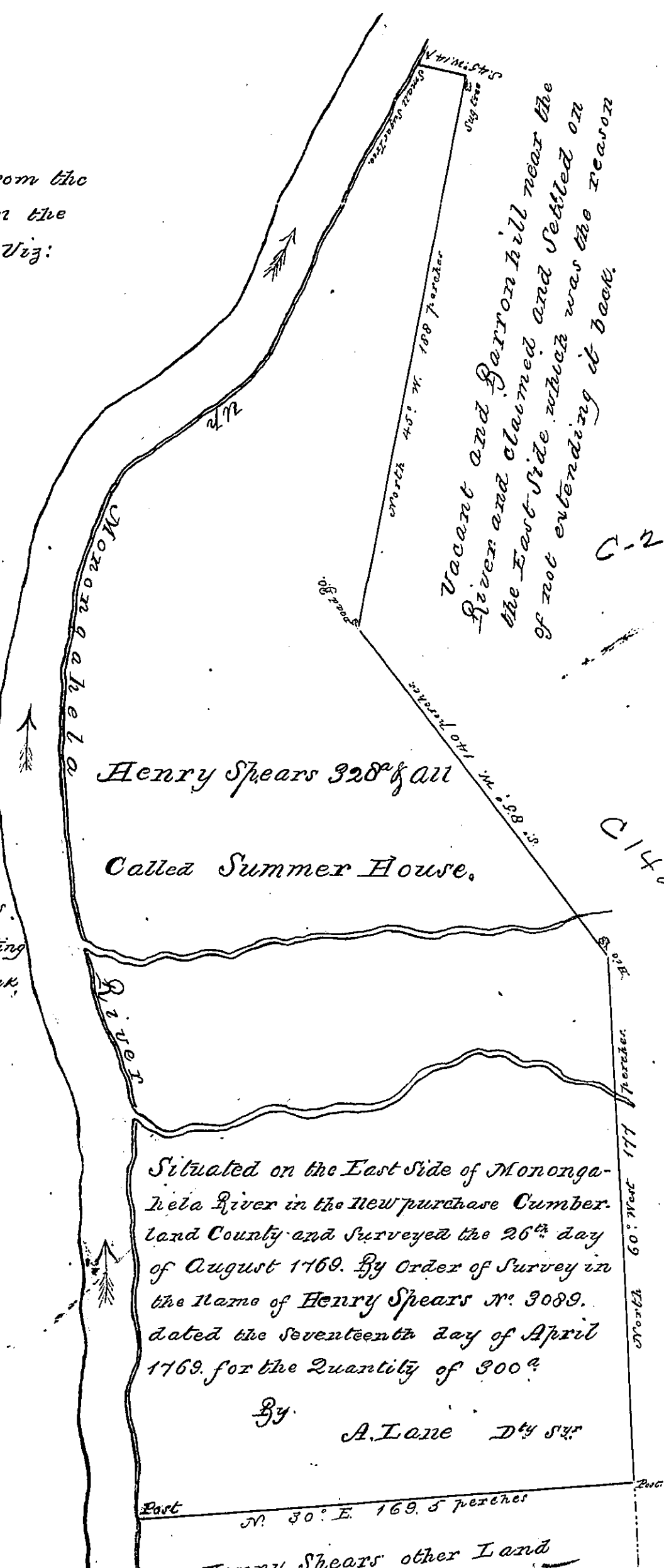


Courses and Distances from the Small Sugar Tree marked in the Draft up the River viz:

- S. 27° E. 598 perches
- S. 30° E. 56 perches
- S. 7° E. 63.5 perches
- S. 32½° E. 10 perches
- S. 43¾° E. 30 perches
- S. 52½° E. 30 perches
- S. 63½° E. 77 perches
- S. 73° E. 56.2 perches
- S. 41½° E. 10 perches
- S. 57° E. 124.5 perches to a post No. 525

Note the River Courses as above in this Survey were run on the Top of the River Bank and the Distances noted falling off from the Edge of the Bank which to account for there is to be added to the Quantity contained within the Courses as set down 3 Acres accounting the whole to the Edge of the Bank.

To
John Lukens Esq:
Surveyor General



IN TESTIMONY that the above is a copy of the original remaining on file in the Department of Internal Affairs of Pennsylvania, made conformably to an Act of Assembly approved the 16th day of February, 1833, I have hereunto set my Hand and caused the Seal of said Department to be affixed at Harrisburg, this

Fourth day of August 1876

Wm. M. Handley
Secretary of Internal Affairs